

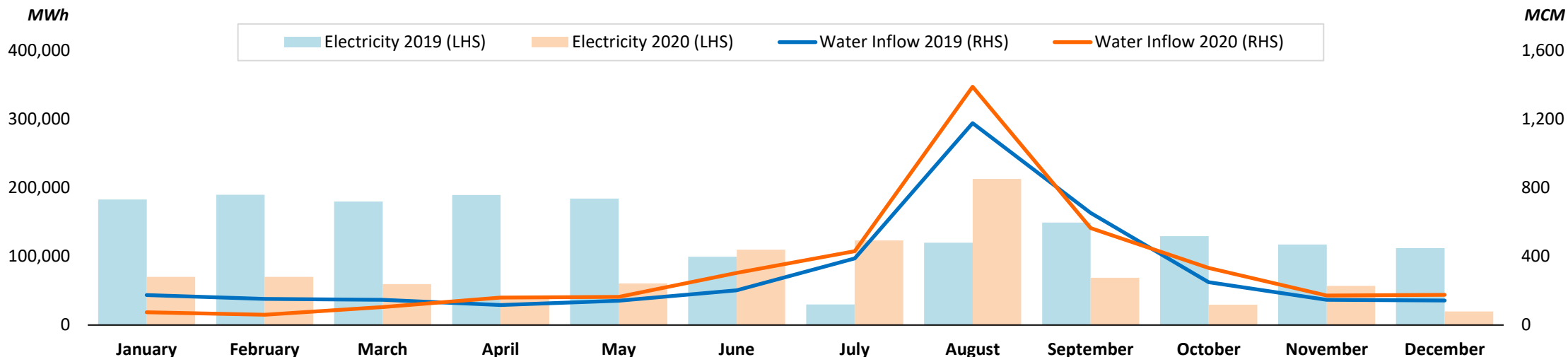


CKPower
ENDLESS ENERGY



Operating Statistics
December 2020

Nam Ngum 2 Hydroelectric Power Plant (NN2HPP)



2019												TOTAL	
PE (MWh)	179,414	190,000	180,000	189,473	184,336	99,670	29,793	120,000	149,475	125,404	114,797	112,163	1,674,526
SE (MWh)	-	-	-	-	-	-	-	-	-	4,172	-	-	4,172
EE (MWh)	-	-	-	-	-	-	-	-	-	-	-	-	-
TE (MWh)	3,637	-	-	-	-	-	-	-	-	-	2,577	-	6,214
TOTAL (MWh)	183,051	190,000	180,000	189,473	184,336	99,670	29,793	120,000	149,475	129,576	117,375	112,163	1,684,912
Water Inflow (MCM)	174	152	147	116	141	203	388	1,177	654	249	147	142	3,689
2020												TOTAL	
PE (MWh)	70,000	70,000	59,516	39,198	60,635	109,604	123,120	213,118	68,914	29,431	52,418	19,714	915,668
SE (MWh)	-	-	-	-	-	-	-	-	-	-	-	-	-
EE (MWh)	-	-	-	-	-	-	-	-	-	-	-	-	-
TE (MWh)	-	-	-	-	-	-	-	-	-	-	4,437	-	4,437
TOTAL (MWh)	70,000	70,000	59,516	39,198	60,635	109,604	123,120	213,118	68,914	29,431	56,855	19,714	920,105
Water Inflow (MCM)	74	60	105	160	164	304	431	1,390	565	333	172	176	3,934

PE Account 2020

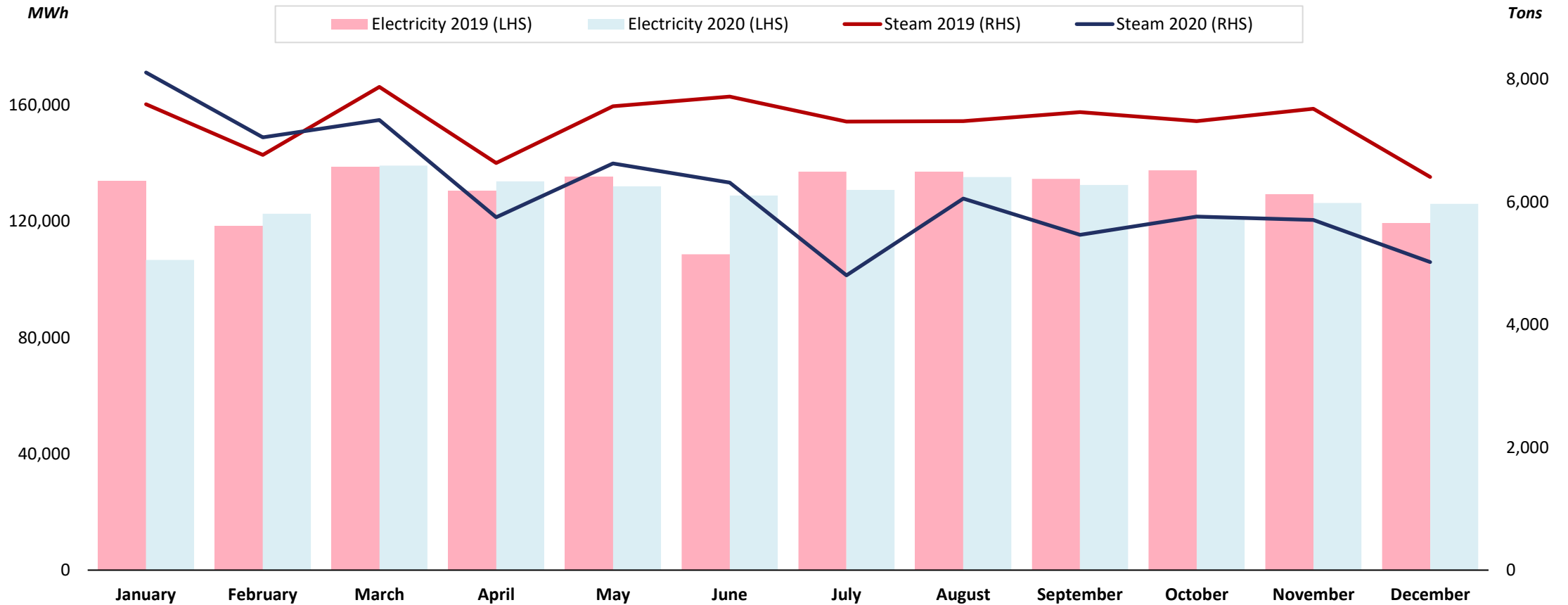
Beginning	-
Added (+)	-
Used (-)	-
Ending	-

SE Account 2020

Beginning	-
Added (+)	-
Used (-)	-
Ending	-

Remark: LHS = Left-Hand Side; RHS = Right-Hand Side

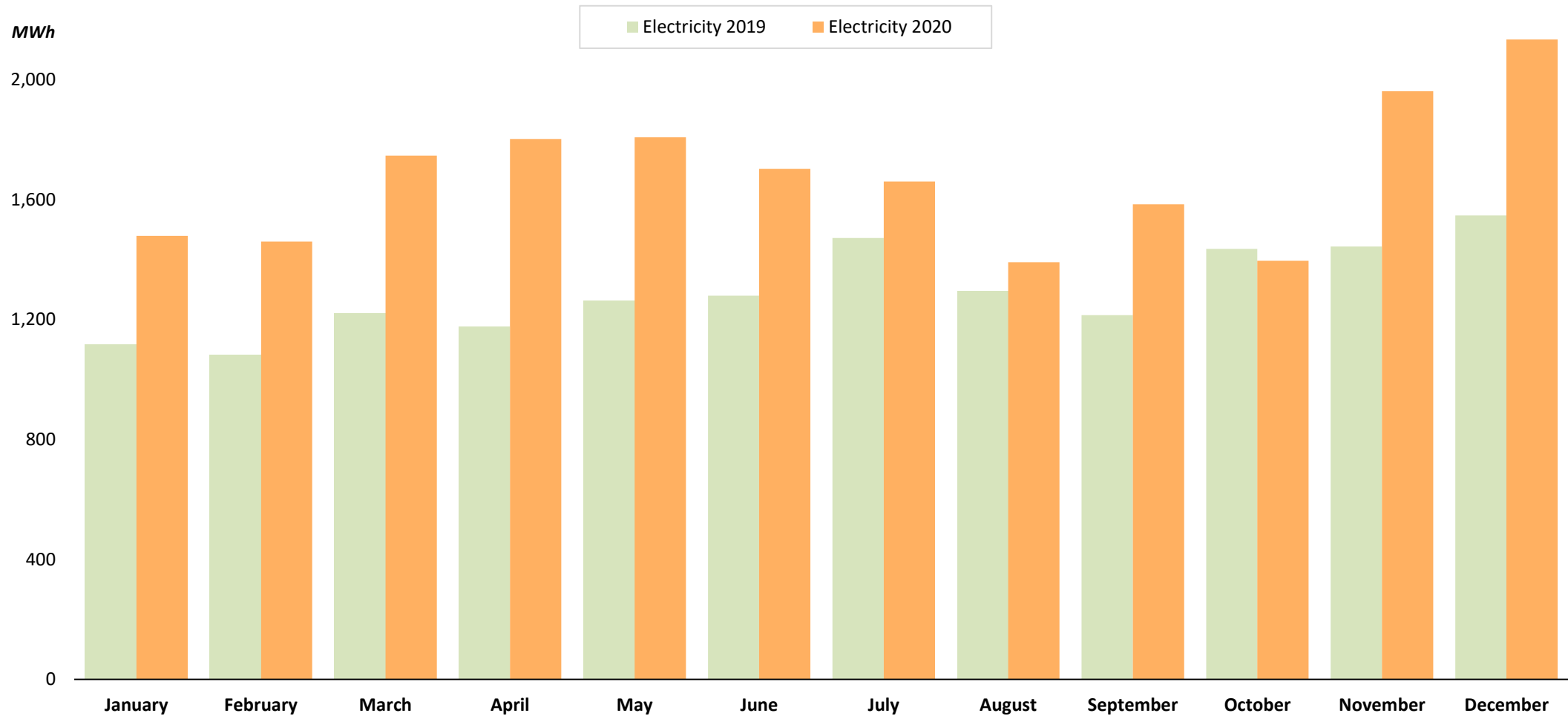
Bangpa-in Cogeneration Power Plant (BIC)



2019													TOTAL
Electricity (MWh)	133,820	118,472	138,700	130,602	135,338	108,677	137,108	137,056	134,658	137,580	129,370	119,450	1,560,830
Steam (Tons)	7,594	6,767	7,876	6,635	7,559	7,717	7,311	7,318	7,466	7,318	7,518	6,407	87,486
2020													TOTAL
Electricity (MWh)	106,732	122,640	139,228	133,740	132,070	128,854	130,865	135,271	132,504	121,408	126,532	126,007	1,535,670
Steam (Tons)	8,112	7,054	7,338	5,753	6,627	6,318	4,806	6,057	5,465	5,764	5,709	5,023	74,026

Remark: LHS = Left-Hand Side; RHS = Right-Hand Side

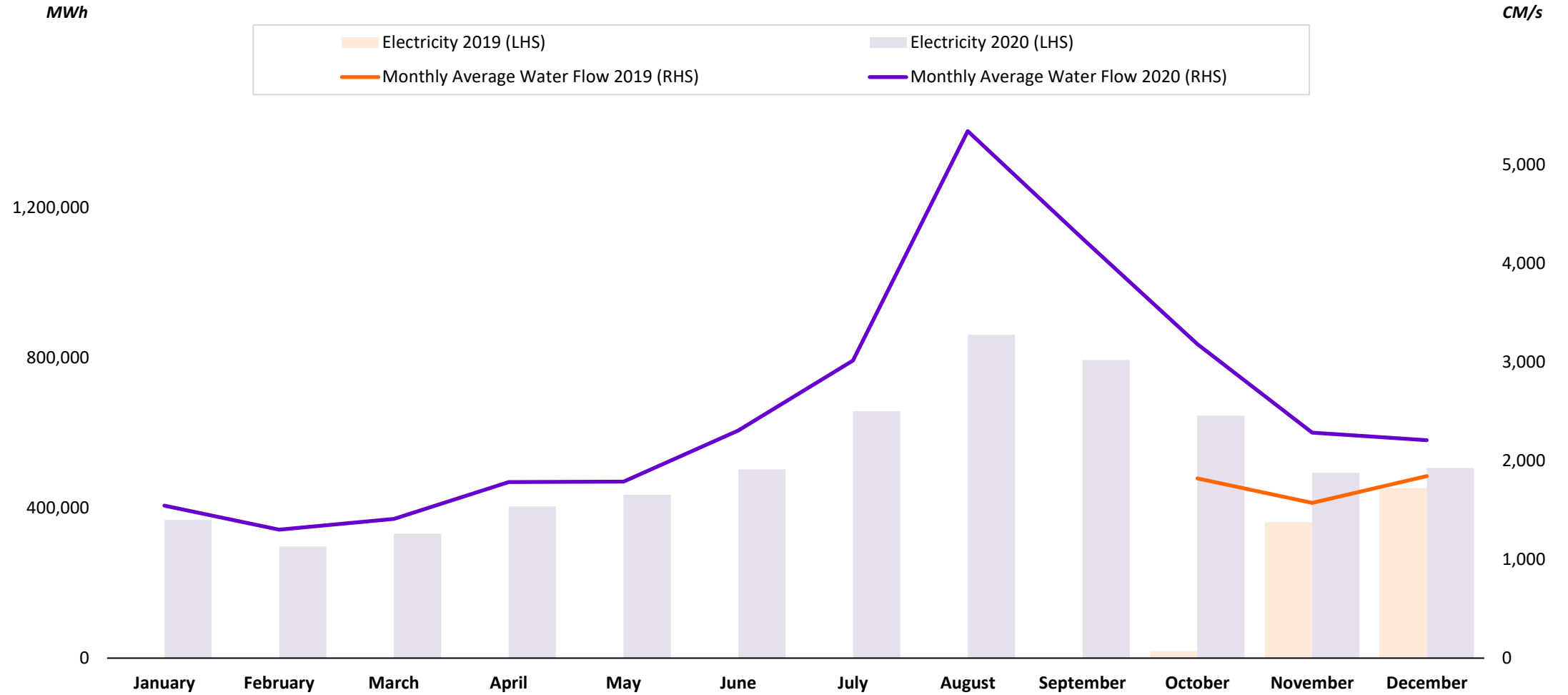
Bangkhenchai Solar Power Plant (BKC)



2019												TOTAL	
Electricity (MWh)	1,117	1,083	1,222	1,176	1,263	1,280	1,472	1,295	1,215	1,436	1,444	1,548	15,550
2020												TOTAL	
Electricity (MWh)	1,479	1,460	1,747	1,802	1,808	1,703	1,661	1,391	1,585	1,396	1,962	2,134	20,130

Remark: Included electricity production from new solar rooftop and farm power plants under BKC.

Xayaburi Hydroelectric Power Plant (XHPP)



2019													TOTAL
Electricity (MWh)													834,662
Monthly Avg Water Flow (CM/s)													1,745
2020													TOTAL
Electricity (MWh)	368,411	297,310	331,591	404,456	435,184	503,165	657,883	861,623	794,816	646,629	493,696	506,698	6,301,402
Monthly Avg Water Flow (CM/s)	1,545	1,300	1,411	1,784	1,788	2,304	3,014	5,337	4,248	3,180	2,284	2,207	2,534

Remark: XHPP COD on 29 October 2019; LHS = Left-Hand Side; RHS = Right-Hand Side