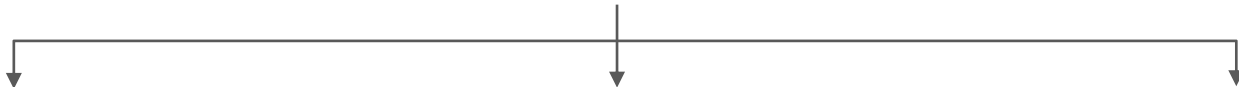




**CKPower**  
ENDLESS ENERGY

# Operating Statistics

*December 2019*



**Hydro – 1,900 MW**




**Cogeneration – 238 MW**



**Solar – 29 MW**




61.3%



**SouthEast Asia Energy Company Limited (SEAN)**


75.0%



**Nam Ngum 2 Power Company Limited (NN2)**

**615 MW**


37.5%



**Xayaburi Power Company Limited (XPCL)**

**1,285 MW**

65.0%




**Bangpa-in Cogeneration Company Limited (BIC)**

<b>Bangpa-in Cogeneration No. 1 (BIC1)</b>	<b>Bangpa-in Cogeneration No. 2 (BIC2)</b>
<b>118 MW</b>	<b>120 MW</b>

**238 MW**

100.0%




**Bangkhenchai Company Limited (BKC)**

Bangkhenchai Solar (BKC)	8.00 MW
Phachi Solar	0.89 MW
Banglen Solar	0.97 MW
Phutthamonthon Sai 5 Solar	0.97 MW
Mahachai Solar	0.72 MW
Krathumban Solar	0.51 MW

Khlong Preng Solar (Under construction) 2.67 MW

**15 MW**

30.0%



**Chiang Rai Solar Company Limited (CRS)**

**8 MW**

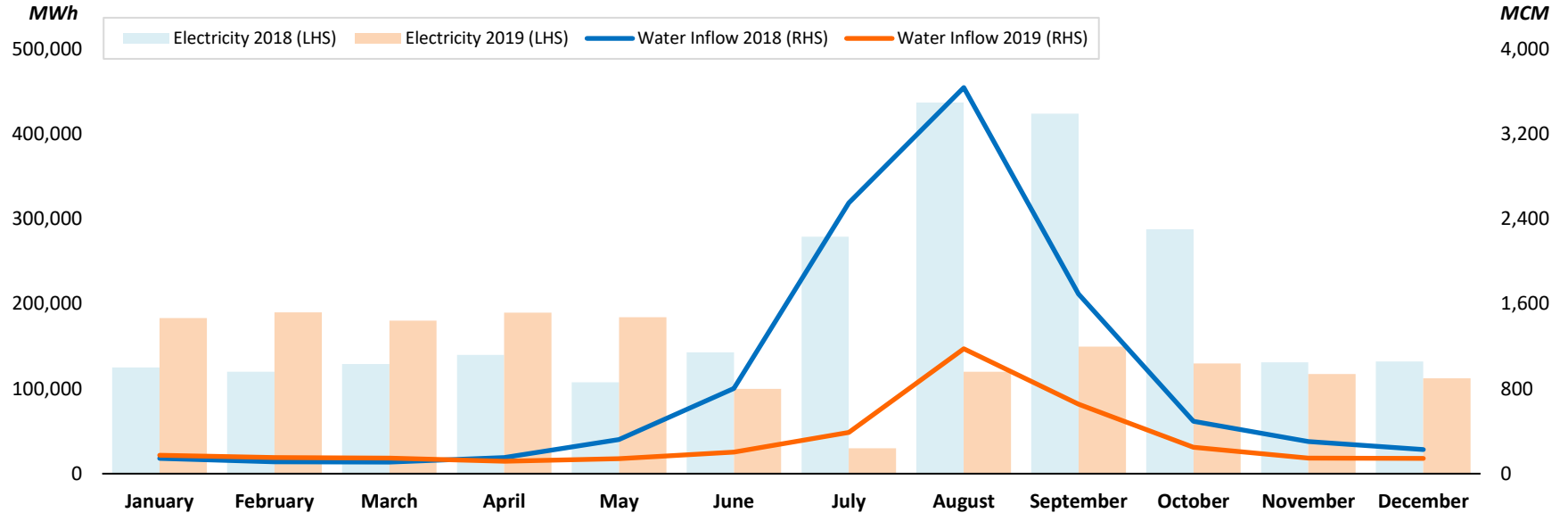
30.0%



**Nakhon Ratchasima Solar Company Limited (NRS)**

**6 MW**

# Nam Ngum 2 Hydroelectric Power Plant (NN2HPP)

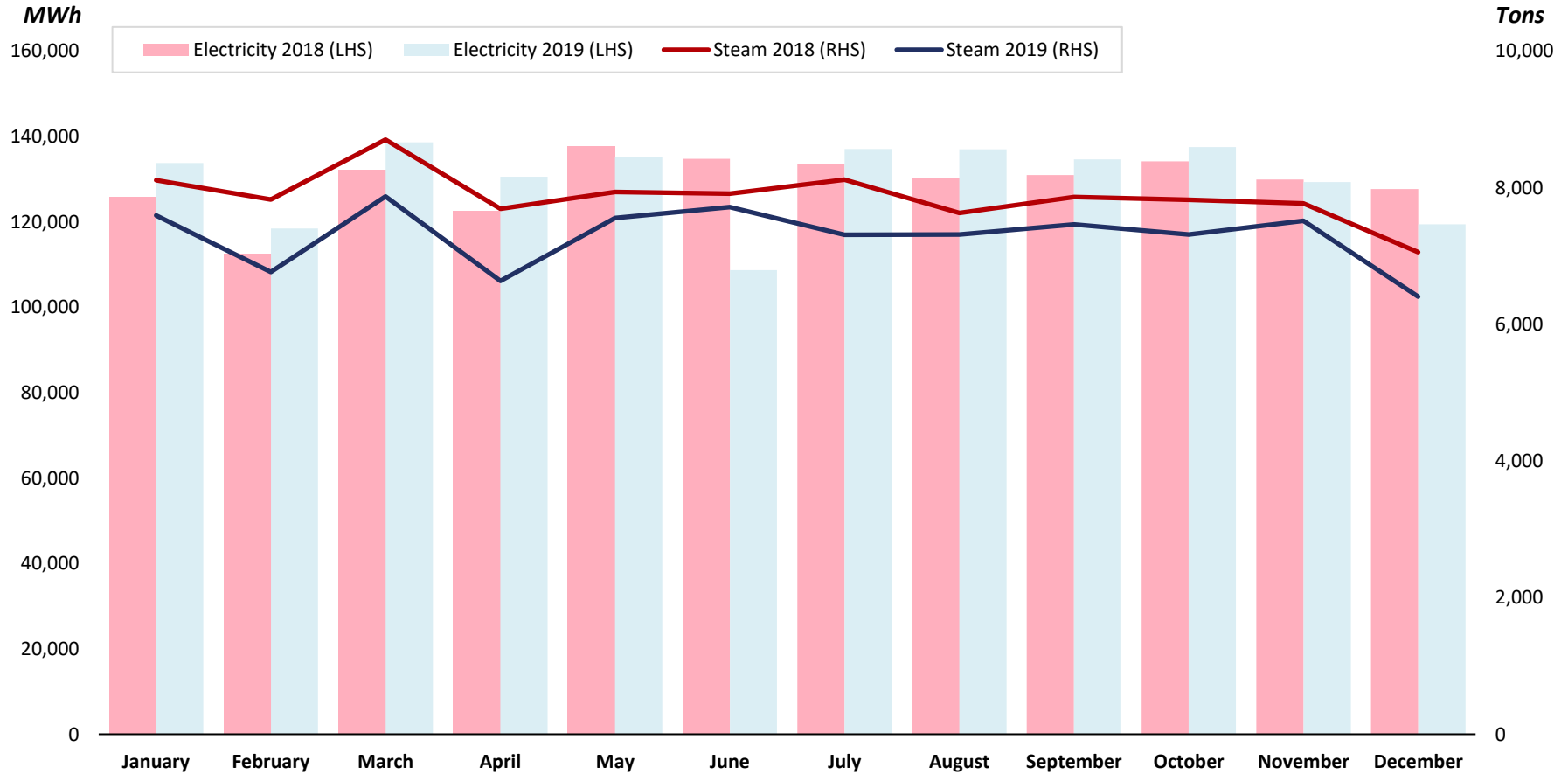


2018													TOTAL
PE (MWh)	125,000	120,000	129,184	139,751	107,529	142,836	217,378	249,602	238,640	246,991	131,034	132,115	<b>1,980,060</b>
SE (MWh)	-	-	-	-	-	-	-	39,403	50,710	39,970	-	-	<b>130,084</b>
EE (MWh)	-	-	-	-	-	-	61,484	147,923	134,524	-	-	-	<b>343,931</b>
TE (MWh)	-	-	-	-	18	-	-	-	-	826	-	-	<b>845</b>
<b>TOTAL (MWh)</b>	<b>125,000</b>	<b>120,000</b>	<b>129,184</b>	<b>139,751</b>	<b>107,547</b>	<b>142,836</b>	<b>278,862</b>	<b>436,928</b>	<b>423,875</b>	<b>287,787</b>	<b>131,034</b>	<b>132,115</b>	<b>2,454,920</b>
Water Inflow (MCM)	143	112	107	150	320	802	2,550	3,636	1,694	494	302	226	<b>10,535</b>
2019													TOTAL
PE (MWh)	179,414	190,000	180,000	189,473	184,336	99,670	29,793	120,000	149,475	125,404	114,797	112,163	<b>1,674,526</b>
SE (MWh)	-	-	-	-	-	-	-	-	-	4,172	-	-	<b>4,172</b>
EE (MWh)	-	-	-	-	-	-	-	-	-	-	-	-	<b>-</b>
TE (MWh)	3,637	-	-	-	-	-	-	-	-	-	2,577	-	<b>6,214</b>
<b>TOTAL (MWh)</b>	<b>183,051</b>	<b>190,000</b>	<b>180,000</b>	<b>189,473</b>	<b>184,336</b>	<b>99,670</b>	<b>29,793</b>	<b>120,000</b>	<b>149,475</b>	<b>129,576</b>	<b>117,375</b>	<b>112,163</b>	<b>1,684,912</b>
Water Inflow (MCM)	174	152	147	116	141	203	388	1,177	654	249	147	142	<b>3,689</b>

PE Account 2019		SE Account 2019	
Beginning	-	Beginning	-
Added (+)	-	Added (+)	-
Used (-)	-	Used (-)	-
Ending	-	Ending	-

Remark: LHS = Left-Hand Side; RHS = Right-Hand Side

# Bangpa-in Cogeneration Power Plant (BIC)

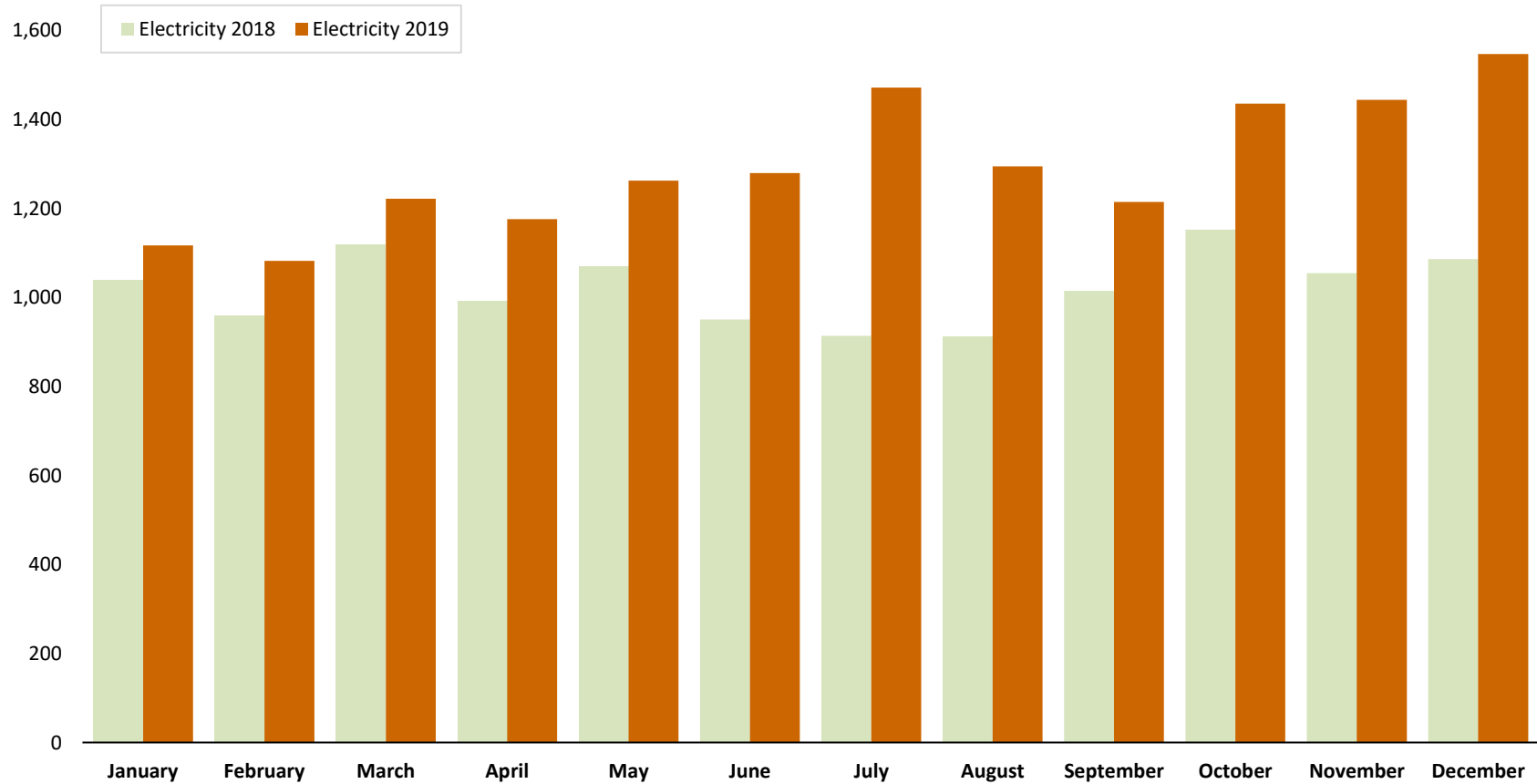


2018													TOTAL
Electricity (MWh)	125,821	112,550	132,296	122,669	137,815	134,821	133,654	130,410	130,993	134,202	129,919	127,732	1,552,883
Steam (Tons)	8,110	7,827	8,705	7,695	7,939	7,913	8,119	7,632	7,866	7,826	7,770	7,057	94,459
2019													TOTAL
Electricity (MWh)	133,820	118,472	138,700	130,602	135,338	108,677	137,108	137,056	134,658	137,580	129,370	119,450	1,560,830
Steam (Tons)	7,594	6,767	7,876	6,635	7,559	7,717	7,311	7,318	7,466	7,318	7,518	6,407	87,486

Remark: LHS = Left-Hand Side; RHS = Right-Hand Side

# Bangkhenchai Solar Power Plant (BKC)

MWh



## 2018

Electricity (MWh)	1,039	960	1,119	992	1,071	951	914	912	1,015	1,152	1,055	1,086	<b>TOTAL</b>	<b>12,268</b>
-------------------	-------	-----	-------	-----	-------	-----	-----	-----	-------	-------	-------	-------	--------------	---------------

## 2019

Electricity (MWh)	1,117	1,083	1,222	1,176	1,263	1,280	1,472	1,295	1,215	1,436	1,444	1,548	<b>TOTAL</b>	<b>15,550</b>
-------------------	-------	-------	-------	-------	-------	-------	-------	-------	-------	-------	-------	-------	--------------	---------------

Remark: Included electricity production from new solar rooftop power plants under BKC.