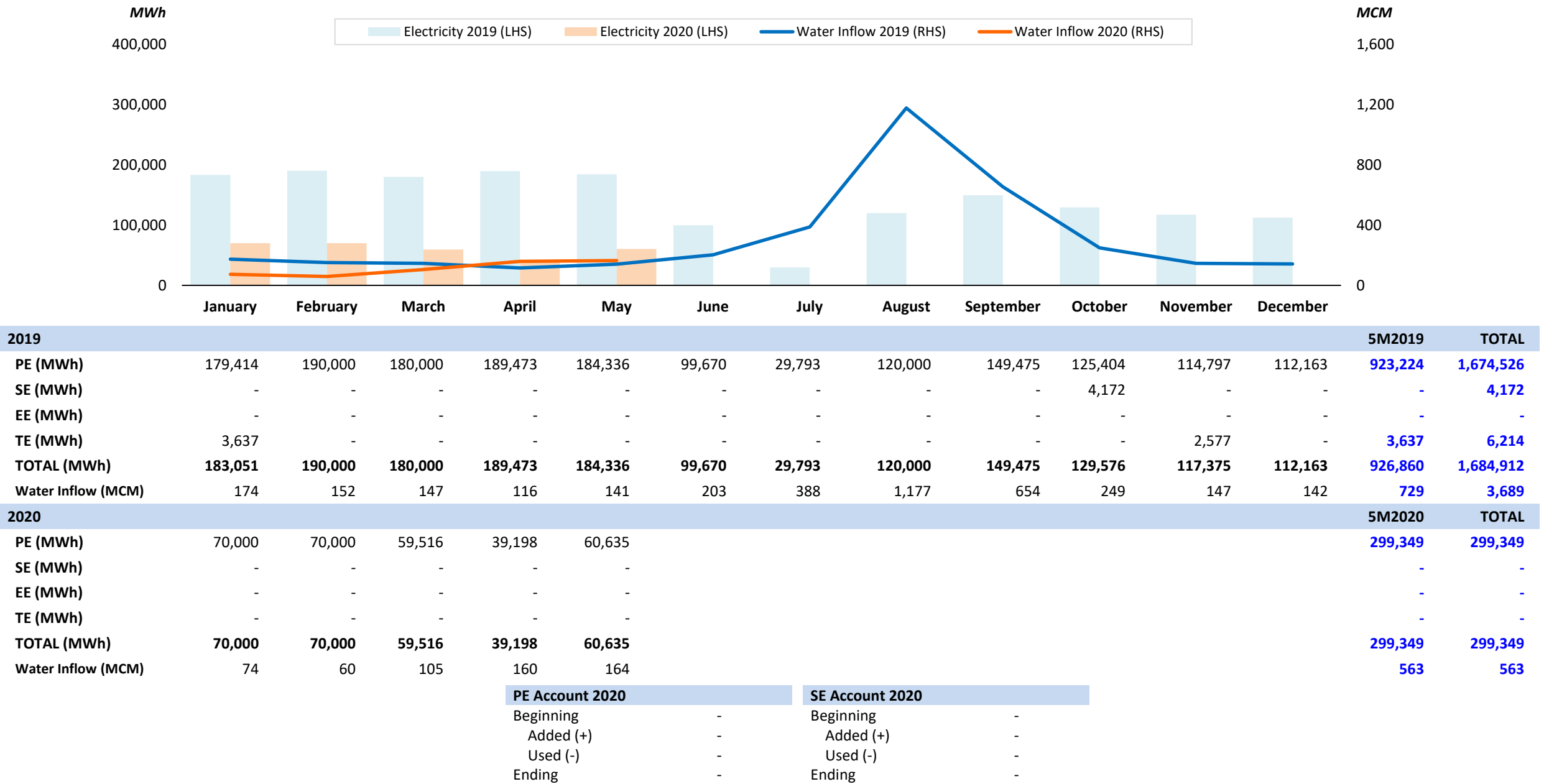


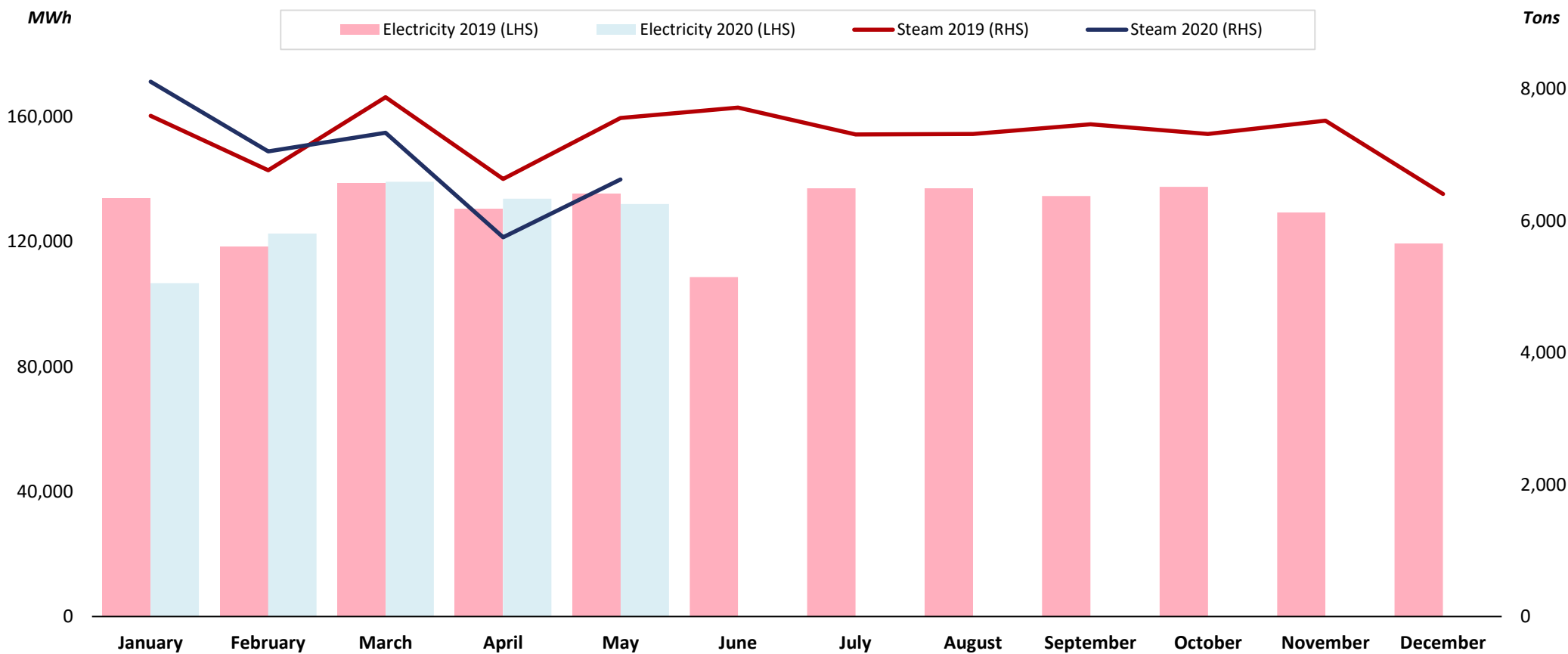


Nam Ngum 2 Hydroelectric Power Plant (NN2HPP)



Remark: LHS = Left-Hand Side; RHS = Right-Hand Side

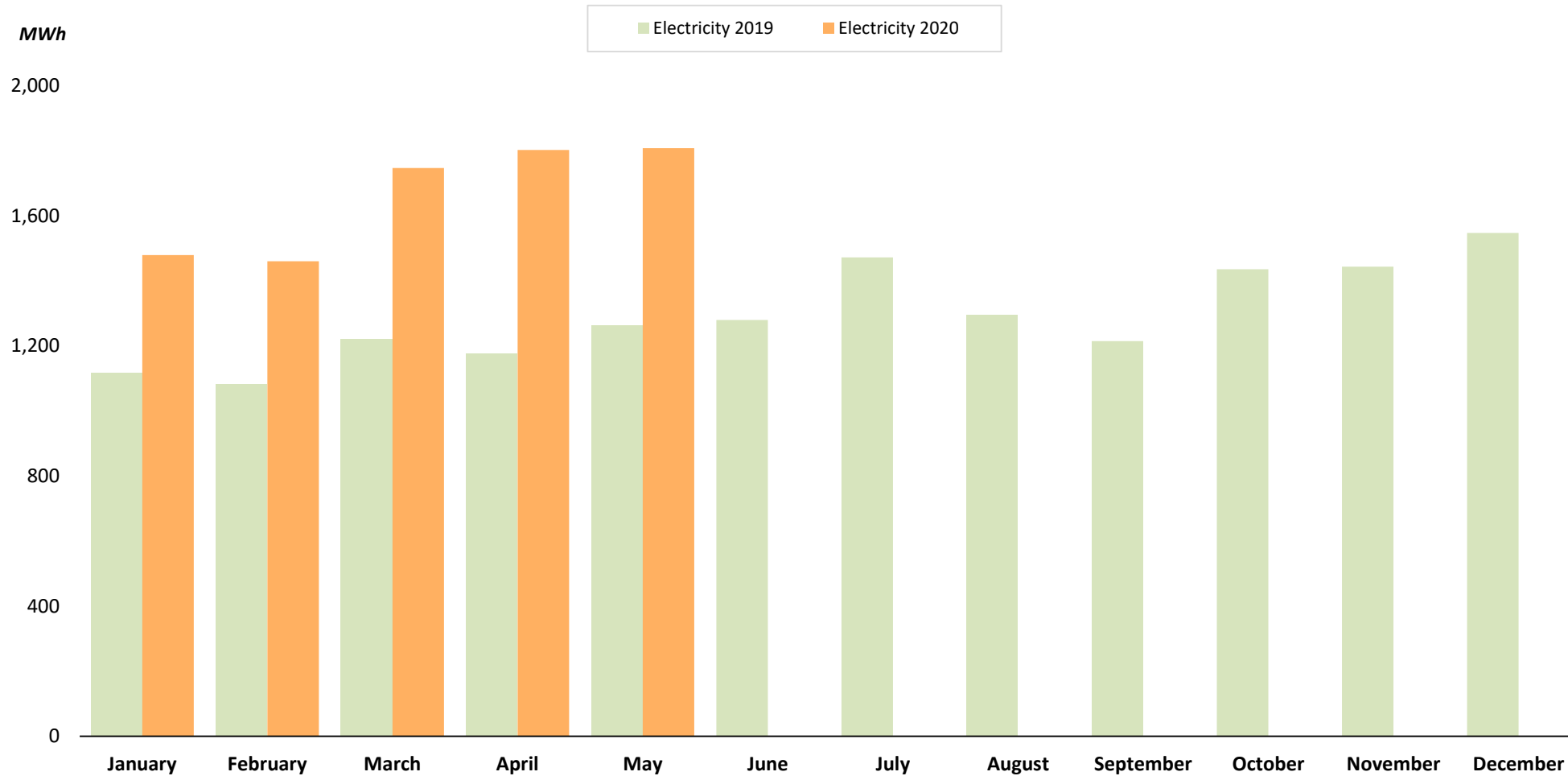
Bangpa-in Cogeneration Power Plant (BIC)



| 2019 | | | | | | | | | | | | | 5M2019 | TOTAL |
|-------------------|---------|---------|---------|---------|---------|---------|---------|---------|---------|---------|---------|---------|---------|-----------|
| Electricity (MWh) | 133,820 | 118,472 | 138,700 | 130,602 | 135,338 | 108,677 | 137,108 | 137,056 | 134,658 | 137,580 | 129,370 | 119,450 | 656,931 | 1,560,830 |
| Steam (Tons) | 7,594 | 6,767 | 7,876 | 6,635 | 7,559 | 7,717 | 7,311 | 7,318 | 7,466 | 7,318 | 7,518 | 6,407 | 36,431 | 87,486 |
| 2020 | | | | | | | | | | | | | 5M2020 | TOTAL |
| Electricity (MWh) | 106,732 | 122,640 | 139,228 | 133,740 | 132,070 | | | | | | | | 634,409 | 634,409 |
| Steam (Tons) | 8,112 | 7,054 | 7,338 | 5,753 | 6,627 | | | | | | | | 34,884 | 34,884 |

Remark: LHS = Left-Hand Side; RHS = Right-Hand Side

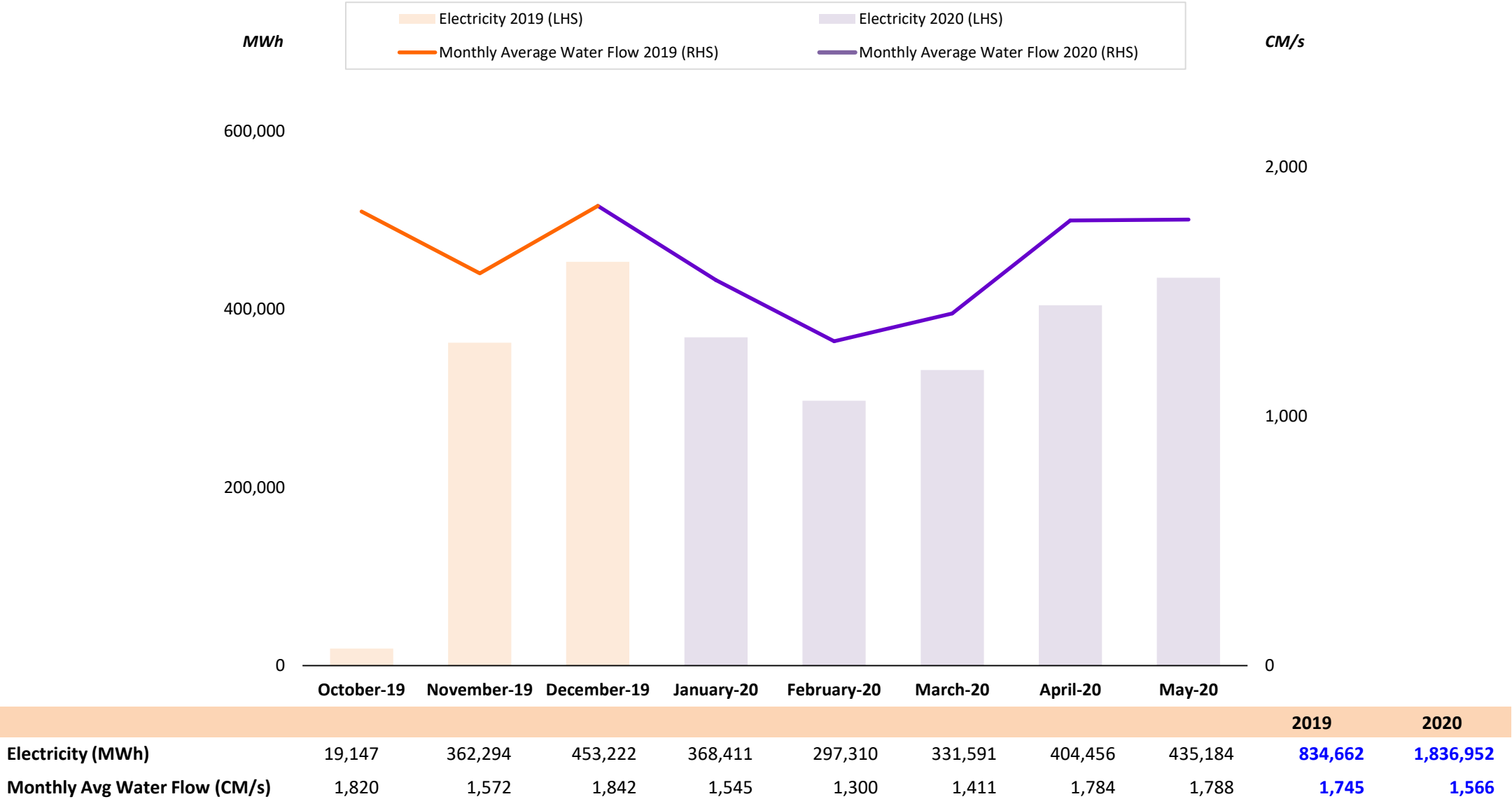
Bangkhenchai Solar Power Plant (BKC)



| 2019 | | | | | | | | | | | | | 5M2019 | TOTAL |
|-------------------|-------|-------|-------|-------|-------|-------|-------|-------|-------|-------|-------|-------|--------|--------|
| Electricity (MWh) | 1,117 | 1,083 | 1,222 | 1,176 | 1,263 | 1,280 | 1,472 | 1,295 | 1,215 | 1,436 | 1,444 | 1,548 | 5,860 | 15,549 |
| 2020 | | | | | | | | | | | | | 5M2020 | TOTAL |
| Electricity (MWh) | 1,479 | 1,460 | 1,747 | 1,802 | 1,808 | | | | | | | | 8,297 | 8,297 |

Remark: Included electricity production from new solar rooftop power plants under BKC.

Xayaburi Hydroelectric Power Plant (XHPP)



Remark: XHPP COD on 29 October 2019; LHS = Left-Hand Side; RHS = Right-Hand Side